

Reimagine your mobility strategy with Android Enterprise



Android Enterprise gives financial services organizations the tools to stay agile in the face of changing technology with a secure, easy-to-manage platform, and powerful AI that boosts employee productivity.

2/3

financial services executives say their business pace is unprecedented.¹

69%

of financial services institutions surveyed believe generative AI will be revolutionary or evolutionary.²

81%

of financial service organizations cite geopolitical risks as the top threat of 2024.³

1. Source: Accenture study commissioned by Google, "Maximizing Mobility for Financial Services", 2022

2. IIF-EY Annual Survey Report on AI/ML Use in Financial Services, 2023

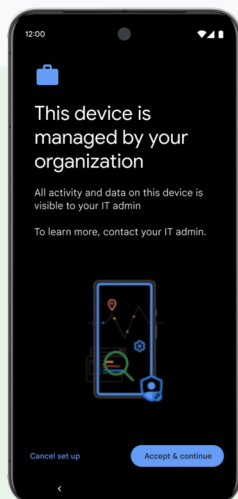
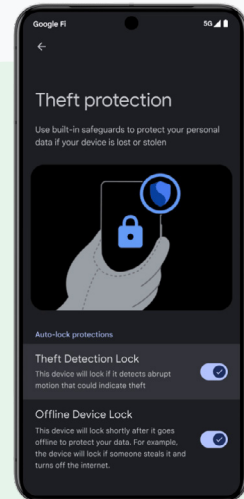
3. [DTCC: With 2024 in Sight, Geopolitical Risk & Inflation Dominate as Top Risks to the Financial Services Industry, 2023](#)



Boost productivity, simplify management, and enhance security with Android Enterprise

Get built-in, proactive device security

- Protect business data with multi-layered security across hardware, OS, Google Play Protect, and EMM-enforced policy controls.
- Ensure app security with Google Play Protect - scanning 200 billion Android apps daily, helping keep over 3 billion users safe from malware.⁴
- Get on-device protection with critical capabilities like verified boot, device encryption, a trusted execution environment (TEE), and timely security updates.
- Prevent data leaks with Android's theft protection suite,⁵ features that lock devices upon suspicious activity and allow remote screen locking.



Ensure easy device management and fast deployment

- Tailor company policies with granular controls and comprehensive management capabilities.
- Secure central app management and distribution via Managed Google Play.
- Configure devices quickly and remotely with zero-touch enrollment.
- Manage Google AI capabilities on your organization's mobile devices with administrative controls and enterprise-grade data protections provided by Gemini for Workspace and Android Enterprise.

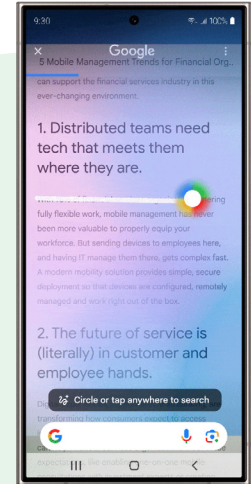
4. <https://security.googleblog.com/2024/05/io-2024-whats-new-in-android-security.html>

5. Theft Detection Lock, Offline Device Lock, and Remote Lock requires Android 10+ and an internet connection. Android Go devices are not supported. Support may vary based on your device model. The user must be using the phone while it is unlocked. All theft protection features will be available in October 2024.



Provide elevated employee experiences with AI tools

- Help your employees get more done in less time with Gmail's "Help me write" to craft and edit emails⁶ in seconds and Circle to Search⁷ to find trends and data points without switching apps.
- Supercharge employee productivity with the Gemini app which helps plan, brainstorm, and analyze data by visualizing trends and enabling data-driven decisions.⁸
- Improve work life balance with Android Work Profile, keeping personal data private and pausing work app notifications after hours.
- Enable employees with innovative devices like flip phones or foldables for enhanced productivity and seamless multitasking on the go.
- Strengthen international relationships with AI interpretation like Live Translate and Live Caption to help your employees communicate and consume content in a variety of languages.⁹



With Android Enterprise, we have total visibility and control of our organization's distributed devices from a single location... The Android devices are user-friendly for both employees and our IT teams, who have management and compliance top of mind. And when we save time, we gain more time to serve clients, no matter where their financial future takes them."

Godfrey Francis

Head of Digital Workplace at IIFL Finance



[IIFL Finance](#) uses zero-touch enrollment, Managed Google Play and Android Work Profile to maintain management, safety and security over their ecosystem of 17,000 Android devices.

⁶. Features may differ depending on subscription, and may not be available based on corporate account settings. Compatible accounts required. Some extensions require setup. Results and country availability may vary. Check responses for accuracy.

⁷. Requires internet connection and compatible devices, apps, and surfaces. Results may vary depending on visual matches.

⁸. Gemini Apps' extensions may require setup or subscription. Available in certain countries and languages. Check responses for accuracy.

⁹. Not available in all languages or countries. Accuracy of Live Caption depends on the quality and clarity of the audio source. Not applicable to music and not available on all media apps. See <https://g.co/help/live-caption>.



Learn more at

www.android.com/enterprise/financialservices