



# Cloud Cost Management

## Overview

This customer document will serve as a guide for implementing the **Looker Cloud Cost Management** solution. There are three different implementation options available, each with increasing capabilities and optimization support. Each option has its own required work that needs to be done as a prerequisite for implementation (Data Migration & Storage, Custom Cost Center Mapping, etc.). The following will walk you through these requirements and options available to you.

## Phase Overview

### Unlocking value in phases



#### Phase 1

**Consolidated reporting view of cloud spend across AWS, Azure & GCP.**



#### Phase 2

**Centralized storage and harmonization of billing data.**

+ Mapping of services, resources & similar SKUs across clouds.



#### Phase 3

**Forecasted spend and actions to trigger decision making.**

+ Mapping of tags/labels & cost centers across clouds.

## Installed in Looker Marketplace

Each phase will include a [Looker Block](#) that can be downloaded via the [marketplace](#) in your Looker Instance. Please note that each block will require some customization and will not work without the respective prerequisites.

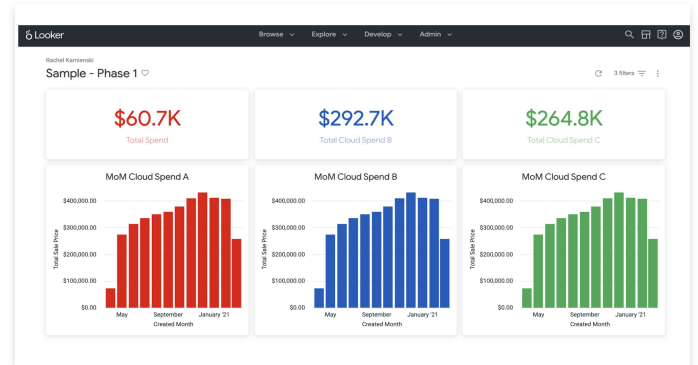


## Phase Architecture

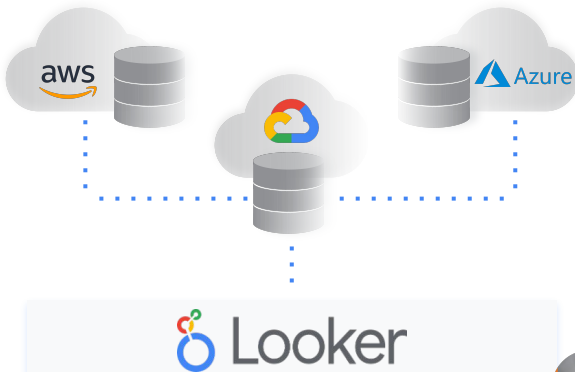
### 1 Phase 1: Data Siloed



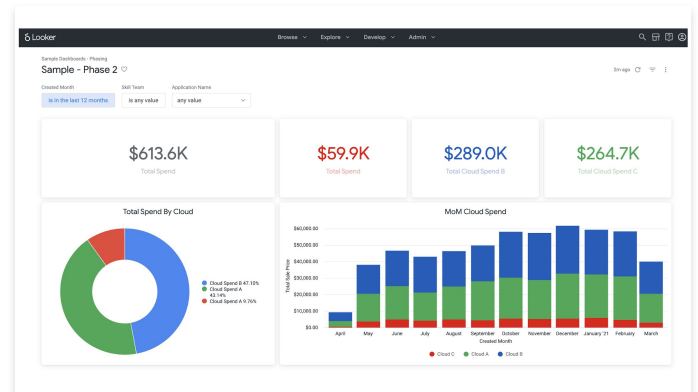
- + Billing datasets exist **siloed in each respective cloud database**. See further instructions for how to do this in each cloud provider.



### 2 Phase 2: Data Centralized



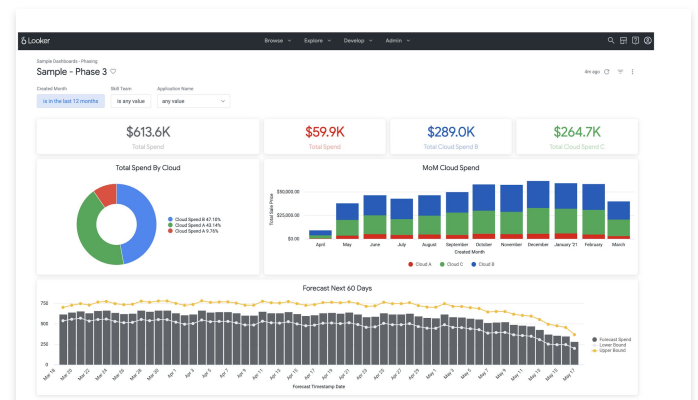
- + Billing data is **centralized in a single data warehouse (BigQuery)**. This requires ongoing ETL processes.



### 3 Phase 3: ML Models Applied



- + Once centralized in BigQuery, **BQML models are applied to the data** to forecast future spend. Results are outputted into new tables that feed Looker.





# Cloud Cost Management

## Phase 1

### Phase 1

This phase will provide you with a centralized view of your cloud costs for AWS, Azure & GCP. It requires minimal upfront work and can be configured within a day. Please follow the steps below for getting the three billing datasets in their respective data warehouses, and connected to Looker.

Contact [Looker Sales](#) for Phase 2 and Phase 3 requirements and options.

## Prerequisites

### Exporting Billing Data

[Need Help?](#)



Google  
BigQuery

#### GCP

Follow [these steps to set up a billing data export](#) into BigQuery.  
You alternatively could export data to Cloud SQL.



amazon  
ATHENA

#### AWS

Follow [these steps to set up a billing data export](#) into Athena.  
You alternatively could export data to Redshift or MySQL.



#### AZURE

For Azure, you'll need to [create a scheduled export](#), or use the [Azure API](#) to move data into Azure SQL Warehouse.

## Installation

Head over to the marketplace in your Looker instance by clicking on the the second icon in the menu located in the top right corner. Search for **Cloud Cost Management: Phase 1** and click 'Install'.



### Resources and guides:



Looker  
Marketplace



Customizing  
Looker Blocks



Further training